



# GAT MONTHLY MEMBERSHIP PROGRESS REPORT

Results as of: 6/30/2023

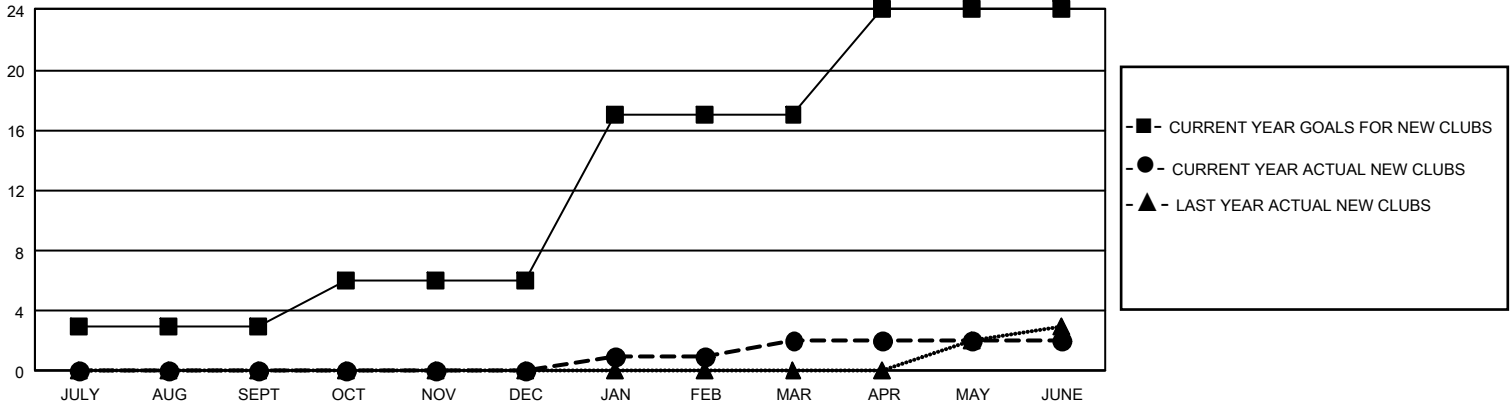
## GMT Constitutional Area 5 - J, Group I

REPORT DOES NOT INCLUDE CLUBS IN UNDISTRICTED AREAS.

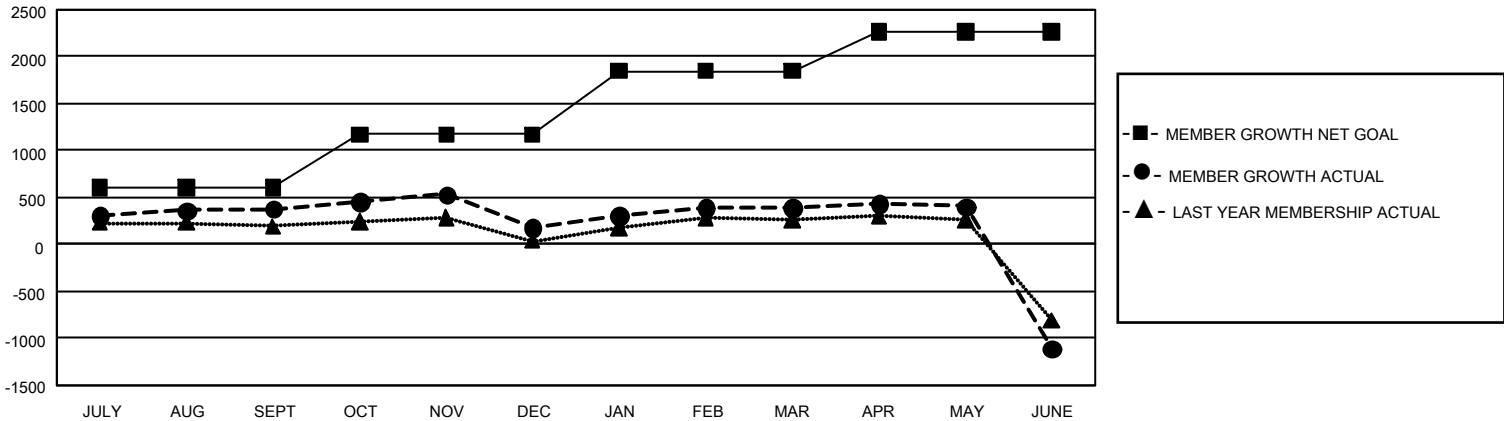
Clubs			
RESULTS FOR 2022-2023			
QUARTER	NEW CLUB GOAL	NEW CLUBS	DROPPED CLUBS
JULY/AUG/SEPT	9	0	0
OCT/NOV/DEC	9	0	2
JAN/FEB/MAR	33	2	1
APR/MAY/JUNE	21	0	18

Members			
RESULTS FOR 2022-2023			
QUARTER	MEMBER GROWTH NET GOAL	MEMBER GROWTH ACTUAL	DROPPED MEMBERS ACTUAL (including transfers)
JULY/AUG/SEPT	600	811	401
OCT/NOV/DEC	570	443	619
JAN/FEB/MAR	680	591	366
APR/MAY/JUNE	420	587	2,042

GOALS AND ACTUAL NEW CLUBS CUMULATIVE



GOALS AND ACTUAL MEMBERS CUMULATIVE



<b>DROPPED CLUBS: 21</b>	599 CLUBS OF 776 ADDED 1 OR MORE NEW MEMBERS	<b><u>GENDER DISTRIBUTION</u></b>	
		MALE 23,276 (75.01%)	FEMALE 7,754 (24.99%)
<b><u>DROPPED MEMBERS</u></b>		NON BINARY 0 (0.00%)	PREFER NOT TO ANSWER 1 (0.00%)
DECEASED 288	<a href="#">CLICK HERE FOR CUMULATIVE MEMBERSHIP DATA</a>	TOTAL FAMILY UNIT MEMBERS 11,899	
CLUB CANCELLED 33		FAMILY MEMBERS PAYING HALF DUES 6,490	
OTHER 3,106			
<b>TOTAL 3,427</b>			